



6 La Colline Court, Le Mont De Gouray, St Martin, Jersey, JE3 6UL
£3,500

Slomans Estate Agents.
17 La Colomberie, St Helier,
Jersey JE2 4QB
T: 01534 879787
E: sales@slomans.co.uk



La Colline Court, St Martin, JE3 6UL

Exceptional views over Royal Bay of Grouville and Gorey Harbour.

This spacious and incredibly stylish 3 bedroom apartment is one of only 14 in this exclusive development and is situated in easy walking distance of the shops and restaurants of Gorey village and Pier.

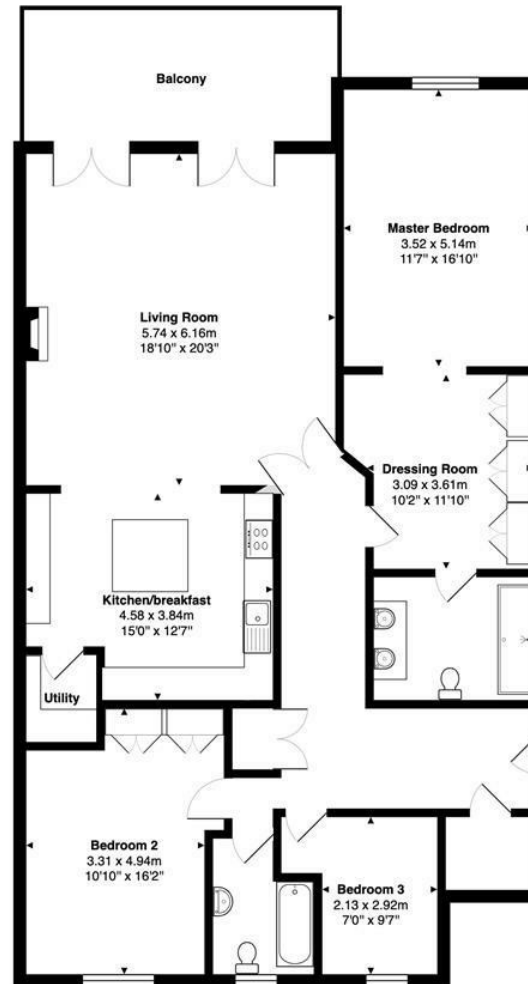
There is a large balcony, ideal for al fresco dining, and its own double garage, large storage room, as well as beautifully maintained communal gardens and on site caretaker.

Available from 8th December to Entitled and Licensed applicants. £3,500p/m. Regret no pets.

VIEWING

Please call Slomans, Sole Agents on 87 97 87. Please note that all areas and measurements given in these particulars are approximate and rounded. The text, photographs and floor plans are for general guidance only.





Total Area: 144.8 m² ... 1559 ft² (excluding balcony)

